



# Weekly Newsletter

HI, AND WELCOME :)

## Network Update

In a very bittersweet trade we start the New Year with Fiona Lord stepping down from the LGBTQ+ Network.

In her stead, Richard Harwin and Kimora May Johnson will be leading the Network for the next two years.

We wish Fiona nothing but the best of luck in her new role, and her energy in leading the Network will be sorely missed.

A small interview with your new Co-Leads can be found [here](#), on the intranet :)



Richard  
He/Him



Kimora May  
She/They



LONDON PRIDE 2022, ORGANISED BY FIONA <3



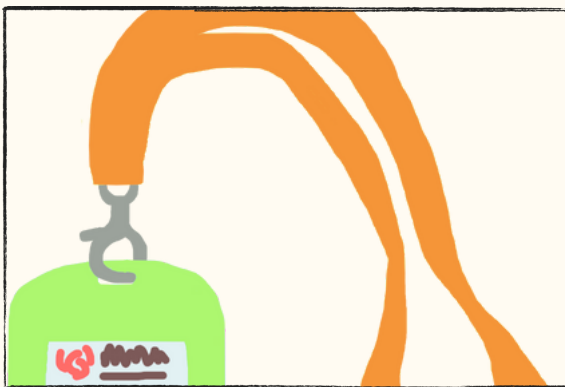
## Network Meetings

NEW LINK, NEW TIME

Join us every month for our Network Meetings!  
Come say hello, see whats happening,  
and have a catch up with the rest of the community!



New link!



### Upcoming~

#### ALLIES TRAINING & LANYARDS

We will be relaunching our Allies Training in February, alongside a soft relaunch of the Rainbow lanyards and Allies badges!

MORE NEWS EARLY FEB

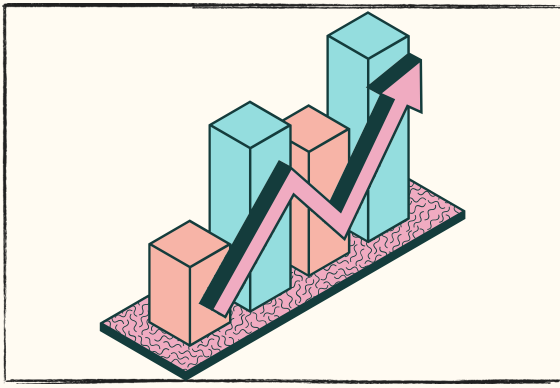


### Pride 2023

#### SHOW YOUR STRIPES FOR PRIDE!

We will shortly be putting together a planning committee for London Pride 2023, if this is something you would be interested in joining please let us know!

STAY TUNED!



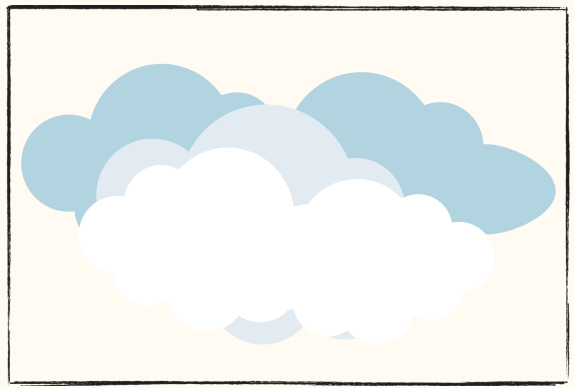
## Get involved

### NETWORK QI PROJECT

Have your say in the Network.  
Come join us to give your comments  
& ideas in this QI Project - make  
this Network **your** Network!

[BIWEEKLY WEDNS AT 9AM](#)

New link!



## Blue Monday

### MONDAY 16TH JAN

Many of us get the 'winter blues', but  
Blue Monday is supposedly the worst.  
Read more about this capitalist stunt  
below, as well as some light tips

[MORE INFO](#)

## Contact Us

### QUESTIONS? COMPLAINTS? JUST WANT A CHAT?

Our inbox is always open, no matter the reason :)

[LET'S CHAT!](#)

Richard Harwin

[Richard.Harwin](mailto:Richard.Harwin@nhs.net)

[@nhs.net](https://twitter.com/nhsnet)



[@RichardHarwin](https://twitter.com/RichardHarwin)

Thanks for reading!  
Stay safe out there!

*Kimora May*

@ELFT\_LGBTQ | [Elft.lgbtq@nhs.net](mailto:Elft.lgbtq@nhs.net)

Kimora May

[Kim.Johnson20](mailto:Kim.Johnson20@nhs.net)

[@nhs.net](https://twitter.com/nhsnet)



[@CamhsKims](https://twitter.com/CamhsKims)

**ELFT LGBTQ+ STAFF NETWORK**