



Weekly Newsletter



Richard
He/Him



Kimora May
She/They

WELCOME BACK :)

New Year, New Format...

Can you believe we are halfway through January already? That zoomed by! Hopefully the New Year is treating you well, and you are all staying toasty out there.

Richard and I have been working hard behind the scenes, but as ever- we welcome all and any feedback :)



Network Meetings

THIRD FRIDAYS AT 3

Join us every month for our Network Meetings!

Come say hello, see whats happening,
and have a catch up with the rest of the community!



HERE'S THE LINK

Staff Training

TRANS AWARENESS

Many thanks to Rainbow Bedfordshire for delivering their staff Trans Awareness

Training on the 10th January!

This fantastic resource was co-produced with young people and service users, to help staff further understand issues and stigma faced by Trans people.

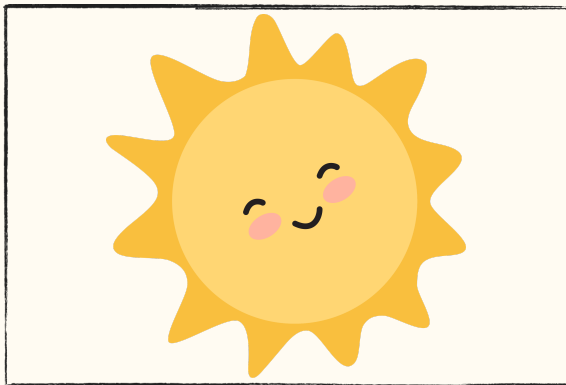
There are two more sessions planned, the next on Monday 13th Feb, at 1pm.

Please share with colleagues to create a safer space for all :)



[13TH FEB, 1-2PM](#)

Flyer
Attached



Vitamin D

BEAT THE WINTER BLUES

As we head into the dreary late winter, beat the winter blues with free Vitamin D supplements! Just fill in a quick form and wait then for the postman...

[FORM AND INFO HERE](#)



LGBTQ+ Champion

WANT TO BE A CHAMPION?

Alongside our Allies training, we are looking for staff to champion LGBTQ+ rights in the workplace.

If this sounds like you, or something you could do- get in touch!

[CONTACT US :\)](#)

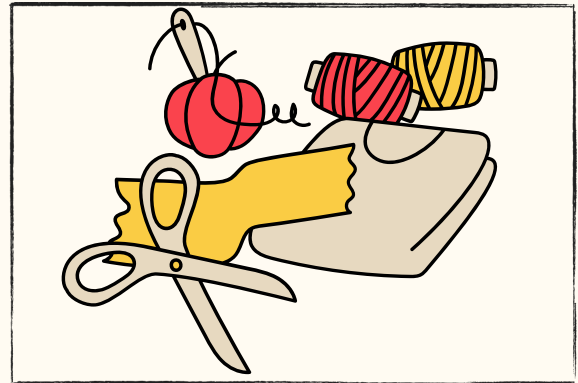
SOCIALS & CRAFTS

Arts and Crafts Events

FEELING CRAFTY?

If you're looking for something cozy to fill your winter weekends, why not try taking up a casual craft?

With no skill expectation and a strong sense of community, there are multiple queer crafting groups across the UK!



LONDON, SE1

21ST JAN, 12:30



BEDFORD, MK40

28TH JAN, 14:00



230225 Walking Tour - Queer Tour of the City of London

Stand in the shadow of St Paul's Cathedral and bask in its reverence as you reflect on its history as the central

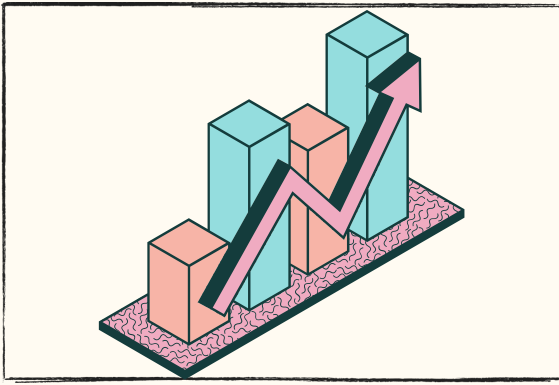
Walking Tour

QUEER HISTORY OF LONDON

If craft isn't your thing then perhaps a walking tour of the city of London, starting outside the Old Bailey. This tour offers insight into London's history, anti-queer legislation and hidden histories of those in the community.

25TH FEB, 14:30

PLACES MUST BE BOOKED, £22 EACH



Get involved

NETWORK QI PROJECT

Have your say in the Network.
Come join us to give your comments
& ideas in this QI Project - make
this Network **your** Network!

[BIWEEKLY WEDNS AT 9AM](#)



CAMHS Talk Podcast

LGBTQ+ SAFETY

Below is the link to a Podcast co-
produced by Young People at CAMHS,
and CAMHS professionals discussing
safety in the LGBTQ+ community.

[PODCAST LINK](#)

Contact Us

QUESTIONS? COMPLAINTS? JUST WANT A CHAT?

Our inbox is always open, no matter the reason :)



Richard Harwin

Richard.Harwin@nhs.net



[@RichardHarwin](https://twitter.com/RichardHarwin)

Thanks for reading!
Stay safe out there!

Kimora May

[@ELFT_LGBTQ](https://twitter.com/ELFT_LGBTQ) | Elft.lgbtq@nhs.net

Kimora May

Kim.Johnson20@nhs.net



[@CamhsKims](https://twitter.com/CamhsKims)

ELFT LGBTQ+ STAFF NETWORK