



## Learning from incidents at ELFT

**Incident report-** Quetiapine 300mg daily prescribed for one of our SU's in Bedford CMHT. The SU had taken this to the local pharmacy where Quinine sulphate was dispensed.

**Immediate actions :** The SU had recognised this was incorrect due to tablet size and shape. The correct medication was later dispensed. No harm identified.

### Learnings

- ❑ **Quetiapine is used for bipolar disorder and schizophrenia. Quinine is used for night time cramps**

### Recommendation

- ❑ **Minimise selection risk error through physical separation on shelves**
- ❑ **Carefully read the prescription, then pick the medication before administering**

### Practice Points

**Incident report-** SU discharged from ward in July 2022. At this time the SU was on clozapine, aripiprazole and sodium valproate. During an outpatient appointment in Nov 2022, it was recognised that aripiprazole and sodium valproate was not supplied by the GP for 4 months

**Immediate actions :** No relapse in mental health or any physical health complications identified. A request for these medicines to be restarted was immediately sent to the GP. Medicines were received within a week.

### Findings

- ❑ **The SU did not order their medicines for a long period of time.**
- ❑ **Poor medicine adherence identified**

### Learnings

**Assessing medication compliance is an important part of the consultation.**

- ❑ **Raise awareness of the importance of taking medicine**
- ❑ **To support individuals in taking responsibility for taking a medicine**
- ❑ **To enable individuals to integrate medicine taking into their normal lifestyle.**

## National guidance NHSE – Haloperidol prescribing for confused/agitated/delirious patients

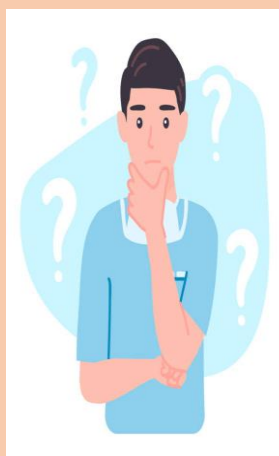
### Background

Safe prescribing of haloperidol in hospital care can be challenging. Dosing requirements and regimens differ depending on age, clinical presentation and existing medical history

2 cases identified through the national reporting system where patients had died following sedation with haloperidol and subsequent monitoring opportunities were missed. **1 incident relating to 10-fold overdose of haloperidol in a frail elderly patient for over a week**

### Key points

- ❑ **With aging there are pharmacokinetic changes with the way your body processes medicines**
- ❑ **Monitoring of electrolytes, prolactin and a baseline ECG is recommended before initiation.**
- ❑ **Further management guidance can be accessed at the below link**  
<https://www.bgs.org.uk/resources/coronavir-us-managing-delirium-in-confirmed-and-suspected-cases>



### Did you know?

Analysis of NHS data obtained under a FOI request showed 56,002 unique patients aged <17 years were prescribed melatonin in April 22 vs 20,881 in April 15, an increase of 168%! Is it time for a review?



## MHRA Drug Safety Update

**Valproate: reminder of current pregnancy programme requirements; information on new safety measures to be introduced shortly**

The CHM has advised that no one under the age of 55 should be initiated on valproate unless two specialists independently consider and document that there is no other effective or tolerated treatment.



**Metolazone 5mg tablets** – prescribers and dispensers should use caution if switching patients between different Metolazone preparations as rate and extent of absorption are formulation dependent. This can impact BIOAVAILABILITY of the product

**Topical testosterone: risk of harm to children following accidental exposure.**

- Inform SU's of the potential consequences if it is accidentally transferred
- Accidental transfer can lead to increased blood testosterone levels
- Possible effects in women –facial/body hair growth. Children – genital enlargement and premature puberty

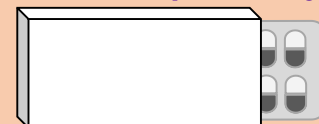
## SPC updates

### 1. Glycopyrronium bromide oral solution

- [checklist](#) is provided to support HCP's mitigate the risk that patients prescribed this medicine will experience anticholinergic side effects. Reminder card available providing advice on how to manage side effects

## Key medicine shortages

1. Calcichew 500mg chewable tablets – other calcium carbonate tablets remain available. *Anticipated resupply of 17/02/2023*
2. Chlordiazepoxide 10mg capsules – consider diazepam as an alternative BZD for alcohol withdrawal. *Anticipated resupply of 27/02/2023*
3. Methylphenidate prolonged release tablets – *limited supplies. Check with local pharmacy team*



## Journal club corner:

**Rhabdomyolysis in a male adolescent associated with monotherapy of fluvoxamine.**

**Accessed at:**

<https://pubmed.ncbi.nlm.nih.gov/36460460/>

Summary: Article describes a case report of rhabdomyolysis in a patient taking fluvoxamine for obsessive compulsive disorder . The symptoms were immediately reversed after the medicine was changed to sertraline. Authors note it is the first reported case of fluvoxamine associated rhabdomyolysis.

**Considerations - serum CK levels should be established before starting fluvoxamine treatment**

**A probable case of collapse due to hyoscine patch**

**Accessed at:**

<https://pubmed.ncbi.nlm.nih.gov/34493552/>

Summary: article reviews case of patient presenting with fall and subsequent long lie, with profound confusion, slurred speech, expressive dysphasia, delirium, tremors, agitation & dehydration. Majority of symptoms were likely due to a hyoscine patch and improved markedly after its removal

**Considerations – hyoscine has anticholinergic properties and the syndrome can cause peripheral symptoms as well as CNS symptoms. ACB score 3> is considered to be clinically significant. Does your patient need a structured medication review?**