

WHAT TO DO IF...


If alarm occurs:

 Mute alarm (if necessary)

Detect the cause and proceed to the appropriate action


 Release alarm  Resume feeding

Empty battery



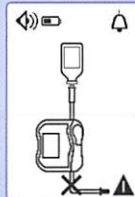
Connect pump to mains supply immediately.

Empty bag/ air in set alarm



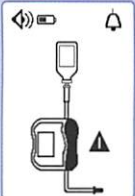
Change container and set or check for air bubbles.

Downstream occlusion alarm




Check that pump set / feeding tube is clear after the pump, at patient side.

Door open alarm




Close pump door.

Upstream occlusion alarm




Check that pump set is clear between the container and the pump.

Target volume almost reached message



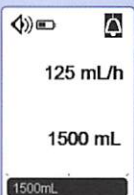
Continue feeding or end feeding.

Set installation alarm




Check set position above and below pump mechanism and insert it correctly.

Target volume reached alarm



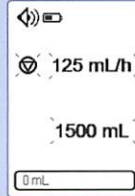
End feeding.

Pump error alarm



Note the technical Error code (Err xyz) and contact your biomedical department.

Start Reminder



Proceed to next step or switch pump off.

MEDICAL DEVICES

Amika®

Enteral Nutrition Pump
Pictorial Reference Guide



FOR ANY ENQUIRIES OR INFORMATION CALL THE HOMECARE
24 HOUR FREEPHONE HELPLINE NUMBER 0808 100 1990

 **FRESENIUS
KABI**
caring for life

Fresenius Kabi Limited, Cestrian Court, Eastgate Way, Manor Park,
Runcorn, Cheshire, WA7 1NT Tel: 01928 533533 Fax: 01928 533520
Email: scientific.affairsUK@fresenius-kabi.com www.fresenius-kabi.com

Amika® is a registered trademark of Fresenius Kabi AG.
Fresenius Kabi Ltd is an authorised user © Fresenius Kabi Ltd.

Date of preparation: October 2016 | Job code: EN01046

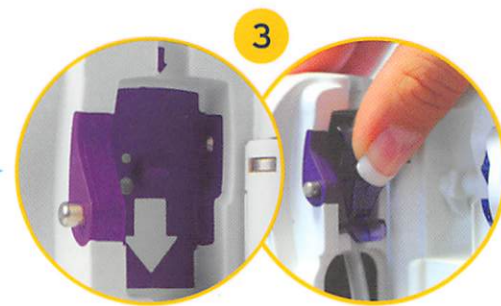
 **FRESENIUS
KABI**
caring for life



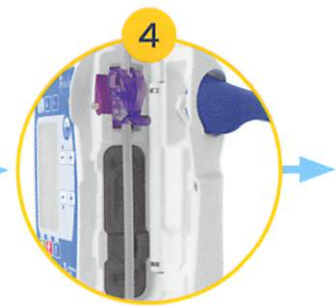
1
Close the pinch clamp on the giving set and then connect to the EasyBag or container



2
Open the pump door



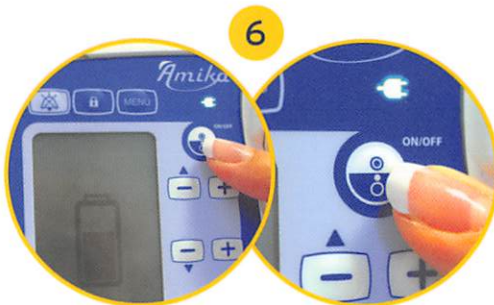
3
Place the giving set pinch clamp in line with the downward arrow until it "clicks" in place



4
Place the giving set tube straight inside the tube guide



5
Close the door, push down the lever to lock it firmly in place



6
Turn the Amika® pump on - pressing the on/off button



7
Press the automatic priming key, and then press the start button



8
When priming is complete, press the start button again



9
Set the desired flow rate by pressing the +/- keys until the desired volume is reached



10
Set the target volume by pressing the +/- keys until the desired volume is reached



11
Press the start key to start feeding



12
To stop feeding at any point, press the stop key. When feeding has finished or your target volume is reached, press the stop key



13
If you need to reset the progress bar after target volume is reached, press the stop key for 2-3 seconds



14
To switch off the pump until the countdown is completed, press the on/off button

