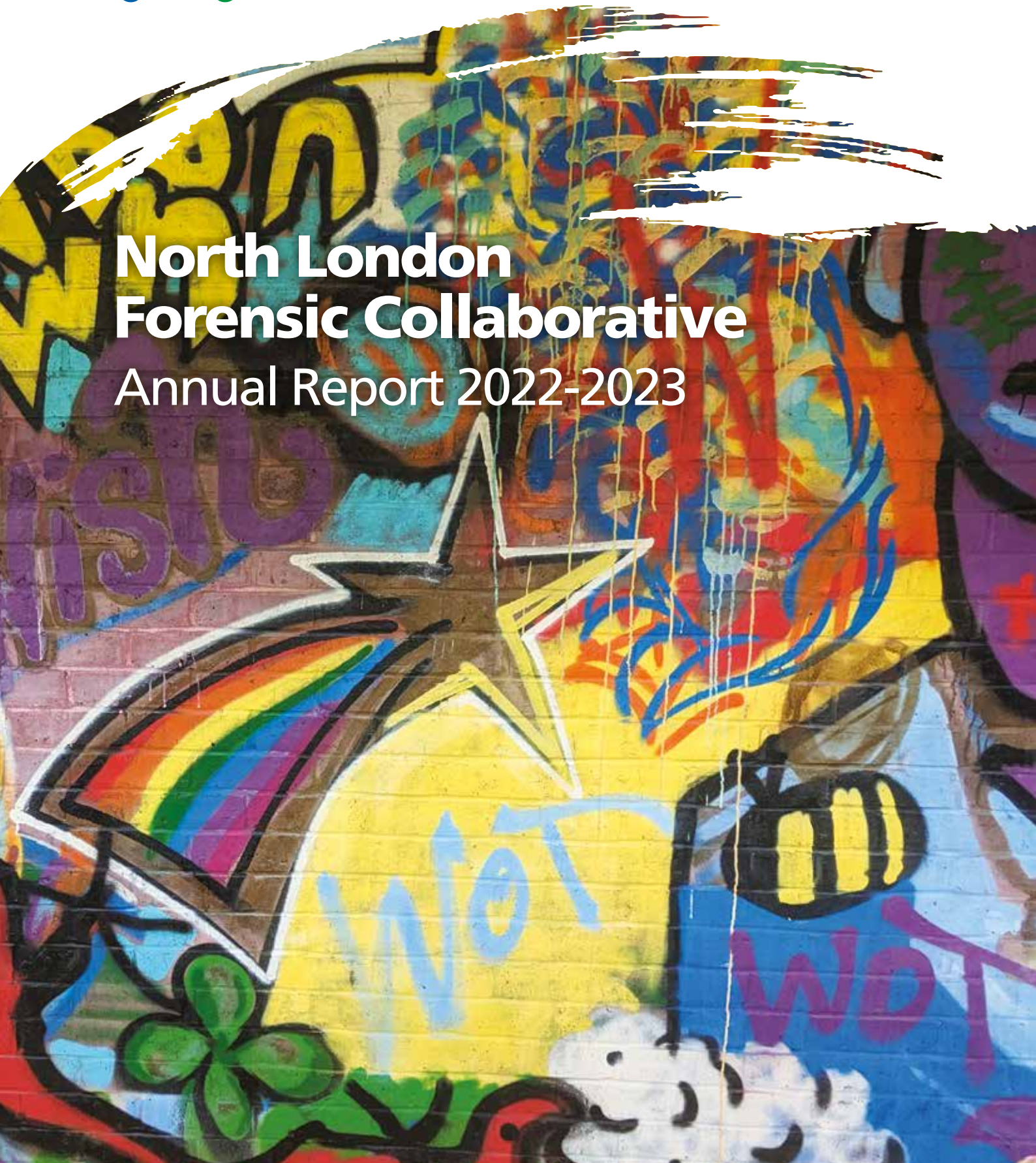




North London Forensic Collaborative Annual Report 2022-2023





Contents

Welcome

Chief Executive Officer Message	4
Patient Council Message	5

About Us

North London Forensic Collaborative	6
Our Population	6
The Commissioning Hub	7
Our Service Quality & CQC Ratings	7

Lived Experience and Co-Production	8
------------------------------------	---

Learning Disability and Autism Programme	12
--	----

Improving Patient Flow Programme	13
----------------------------------	----

Clinical Networks in Action and Shared Learning	14
---	----

Our Achievements 2022/23	20
--------------------------	----

Our Priorities 2023/24	22
------------------------	----

Thank You	23
-----------	----

Get In Touch	24
--------------	----

Information in Alternative Formats	24
------------------------------------	----

North London Forensic Collaborative services are provided by:

Barnet, Enfield and Haringey Mental Health NHS Trust
Central and North West London NHS Foundation Trust
East London NHS Foundation Trust
North East London NHS Foundation Trust
West London NHS Trust

All imagery used within this publication is representative of NLFC facilities and activities. Graffiti artwork has been co-designed by our service users working with a street artist.

Welcome from the Chief Executive

It is with great pleasure and pride that I welcome you to the North London Forensic Collaborative Annual Report 2022/23.

I am delighted to present this comprehensive overview of the Collaborative's achievements and ongoing initiatives. It highlights our co-production work with service users, carers, and families as well as the invaluable work we are doing with our partners and our wider networks.

As the largest specialist mental health collaborative in England, covering a population of six million people across 19 local authorities, five NHS Trusts and two private providers, North London Forensic Collaborative demonstrates how a collaborative approach can bring genuine benefits and transformation across a complex health care system.

This report describes how our Patient Council continues to empower and elevate the voices of the people who use forensic mental health forensics. There are now five Peer Engagement Workers with lived experience working in paid positions alongside case managers in quality assurance roles. Together, they have played a critical role over the last 12 months in the delivery of services that are focused on improving patient outcomes and experience.

I invite you to read this report and join us in celebrating the Collaborative's successes in advancing specialist forensic mental health services, ensuring that those who need and use our services receive the highest quality of care close to home through local community teams and support networks.

I hope you enjoy reading this report.

Jinjer Kandola MBE
Chief Executive

North London Mental Health Partnership



Welcome from the Patient Council

We are pleased and proud to welcome you to the North London Forensic Collaborative Annual Report 2022/23 from the Patient Council.

We are a group of service users with representation from each of the five partner Trusts, meeting weekly on Microsoft Teams. We use our own lived experience of forensic mental health services and our user networks to gather the views of service users from low, medium and female secure services. This places us in a really unique position to represent the voices of service users from across all the providers and ensure that the people who use services are fully involved in the way services are delivered and improved.

We work closely with North London Forensic Collaborative senior management team, ward staff, providers, and patients to co-design and co-deliver quality improvements and service development projects. As a core group within North London Forensic Collaborative governance structure, we provide regular updates on the work of the Patient Council and the views of the service users that we represent. We hold providers and commissioners to account, whilst ensuring that the people who use services can really influence the way services are delivered.

During the last year we have really bonded as a group and found our feet to make progress in pioneering some exciting new projects. An example is our Speak Up campaign which demonstrates the leading role patients and service users can play in developing and leading change programmes and promoting patient safety. As a result of our work, service users can now feel more empowered and encouraged to speak up if they feel they are not receiving safe and good care.

Over the last year we have been working hard to raise the profile of the Patient Council and champion the role of the service user voice, presenting to Trust Boards, senior leadership meetings and at a conference attended by staff from across the collaborative.

We have developed information leaflets and publish a regular newsletter to keep service users and staff up to date on current projects and what we plan to do next.

We are passionate about making a real difference and bringing about positive change to the lives and experiences of service users and the communities they represent.

This report showcases the exciting work and progress we are making as well as the personal experiences, achievements and aspirations of individual Patient Council members. We hope you enjoy reading it and look forward to demonstrating more of our positive work next year.

The Patient Council

North London Forensic Collaborative



About Us

North London Forensic Collaborative

North London Forensic Collaborative is the largest specialist NHS mental health provider collaborative in England and represents a partnership between specialist forensic services within five NHS Trusts including:

- Barnet, Enfield and Haringey Mental Health NHS Trust
- Central North West London NHS Foundation Trust
- East London NHS Foundation Trust
- North East London NHS Foundation Trust
- West London NHS Trust

The Trusts work together with two Independent Service Providers:

- Cygnet Hospital Harrow
- The Priory Hospital Enfield

Barnet, Enfield and Haringey Mental Health NHS Trust is the lead provider of North London Forensic Collaborative and has delegated responsibility from NHS England and Improvement to lead on the strategy, finance, quality assurance and improvement of forensic mental health services for people who originate from North London.

North London Forensic Collaborative is responsible for the commissioning and delivery of low and medium secure inpatient services for men and women. In addition, North London Forensic Collaborative commissions and delivers community forensic services.

There are 750 low and medium secure inpatient beds within the provider collaborative, and Specialist Community Forensic Teams across all North London local authorities are aligned to the three Integrated Care Systems in North London.

The aim of North London Forensic Collaborative is to ensure that the people who access services experience high quality care, as close to home as possible, which is connected to their local community.

Our Population

Our forensic mental health services are provided for people:

- with a mental disorder including neurodevelopmental disorders
- who pose, or have posed, risks to others
- where a risk is usually related to their mental disorder

People accessing our services may have varying mental disorders, specialist rehabilitation needs and may come to our services from courts and prisons to be placed in our secure forensic hospitals. This also includes provision for autistic people and people with a learning disability that fall within the auspices of eligibility for forensic mental health services.



The Commissioning Hub

As the lead provider of North London Forensic Collaborative, Barnet, Enfield and Haringey Mental Health NHS Trust holds delegated responsibility from NHS England and Improvement to deliver commissioning responsibilities consisting of, strategic planning and service development, clinical oversight and quality assurance, finance and contract management. These are provided by the Commissioning Hub Team which is a blend of clinical and non-clinical staff from the provider organisations.

The Commissioning Hub places co-production with patients and staff at the centre of all activities and applying an evidence-based, data-driven approach, using benchmarking, demand and capacity data and needs assessments to inform decision making.

The Commissioning Hub Team facilitates the collaborative governance structure. This includes a Partnership Board, comprised of executive representatives from the NHS providers and Integrated Care Board representatives. The Board is responsible for advising and supporting the collaborative to achieve its strategic aims, whilst ensuring joint ownership and alignment of its objectives between the individual provider Trusts.

The Board is supported by three sub-groups; Clinical and Quality Development Group Finance and Contract Group and Patient Council, which the Clinical Networks feed into. The Clinical and Quality Development Group is comprised of the clinical directors from each provider and focuses on quality improvements and service developments and has oversight of the Clinical Networks. The Finance and Contract Group provides stewardship of the population-based budget and ensures compliance with provider standing financial instructions.

Our Service Quality & CQC Ratings

North London Forensic Collaborative prides itself in delivering the highest quality of care and experience to those accessing forensic mental health services in North London. Our CQC results are testament to our commitment in delivering the high quality, person-centred, holistic care and support that our patients, carers, family and friends expect and deserve.

Provider	CQC Rating	
	Secure Service	Overall
Barnet, Enfield and Haringey Mental Health NHS Trust	Outstanding	Good
Central North West London NHS Foundation Trust	Good	Good
East London NHS Foundation Trust	Outstanding	Outstanding
North East London NHS Foundation Trust	Good	Good
West London NHS Trust	Outstanding	Good



CQC ratings for all 5 North London Forensic Collaborative Trusts

Lived Experience and Co-Production



Patient Council

The North London Forensic Collaborative Patient Council consists of inpatients from adult secure services in each of the five provider Trusts and is a sub-group of the Partnership Board. The Patient Council meets weekly via Microsoft Teams and is facilitated by Barnet Inclusion, a lived experience voluntary organisation that specialises in co-production.

Patient involvement is central to how North London Forensic Collaborative delivers its commissioning responsibilities. The Patient Council's main function is to represent the voices of inpatients and plays a central role in the co-design of quality improvements and new service developments. Patient Council members are provided with training and supervision in the role, which can lead to a career pathway into Peer Engagement Worker paid roles within the Commissioning Hub.

As the Patient Council has become more established, they have increasingly led on initiating new, innovative projects which have been co-designed and co-delivered in collaboration with ward staff and the Commissioning Hub.

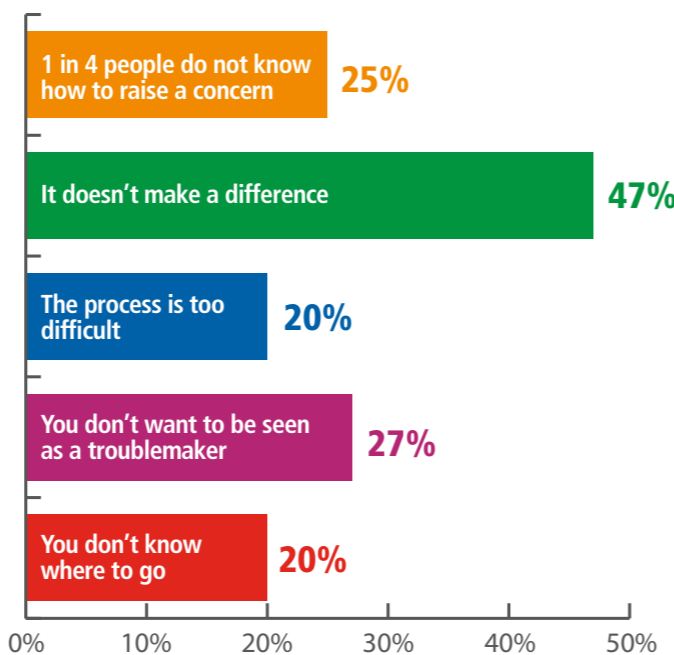
Key achievements over the last year include:

- The development of a Patient Council information flyer and publication of a regular newsletter, so that service users and staff are informed of the work of the Patient Council.
- A healthy eating initiative, following feedback that inpatients wanted more healthy food options. By taking the role of healthy eating champions within hospital wards, Patient Council members advocated for more healthy eating days and running smoothie groups, which has been successfully implemented across the five provider Trusts.
- A mapping exercise to ensure Patient Council representation from low, medium and female secure services across the North London Forensic Collaborative.

This process helped us to understand the importance of Patient Council members attending ward meetings and user forums, and to use these networks to gather patient feedback and share information across all the wards.

- The design and implementation of a patient led Speak Up Campaign to support service users in raising concerns, to feel empowered to speak up and feel confident that any issues raised are taken seriously. A consultation with sixty-six service users took place to find out if they knew how to raise a concern, what barriers prevented raising a concern and what support was required to make the process easier. Each service user had the opportunity to select more than one response. The results highlighted that 1 in 4 people didn't know how to raise a concern, with nearly half of those who responded felt that raising a concern would not make a difference and 20% stating that they didn't want to be seen as a troublemaker.

Our Survey Results



A second consultation asked service users to suggest ideas for improving the process of raising concerns. This led to the initiation of a change programme that will be co-designed and co-delivered between service users and providers over the coming months, with a follow-up survey to measure the project impact.

The Patient Council are proud to be actively empowering service users to raise concerns and influence change.

"We are here to help every service user, its highly refreshing to help each other ...we are one team with different minds."

(Patient Council Member)

"When you speak up sometimes change doesn't happen as quick as we would like it to be, but sometimes we need to be patient and keep fighting because change does happen."

(Patient Council Member)

"The Patient Council gives myself and my peers a voice. We can express ourselves about things that are happening in the hospital, and we can help to make positive changes."

(Patient Council Member)

"We are proud that the Patient Council was shortlisted for the London Division Team of the year award by West London Trust."

(Patient Council Member)

"Working with North London Forensic Collaborative is an absolute pleasure. Their culture is fantastic – authentic, human, relatable – and despite being a contracted organisation we feel that we're working in a true partnership with them, which is important to us as a lived experience organisation."

(Barnet Inclusion Unlimited)

"Don't give up or think that you can't make a difference because you can."

(Patient Council Member)

Peer Engagement Workers

Our Peer Engagement Worker Team is comprised of five staff who have lived experience of forensic or inpatient mental health services, recruited to work alongside the case managers in a quality assurance role. The team has recently been expanded to include a Female and Community Peer Engagement Worker meaning that Peers are operating across all inpatient and community services.

Using their lived experience, Peer Engagement Workers are providing a strong communicative link between service users, providers and the Commissioning Hub. They are present on wards and in community teams speaking directly to patients about their care experience, to ensure that the voice of service users is central to all aspects of quality improvement and service development. Peer Engagement Workers also assist with reviews of restrictive interventions, conduct service reviews and report into contract meetings.

Our Peer Engagement Workers could be described as a 'golden thread' between the service user forums and our five NHS provider Trusts.

Key achievements over the last year include:

- The design and distribution of a Peer Engagement Worker information leaflet to promote and raise the profile of the role amongst service users and North London Forensic Collaborative staff.
- The development of a Peer Engagement Worker Handbook co-authored by the Peers, that clearly defines the role and responsibilities, as well as providing helpful guidance for existing and newly recruited Peer Engagement Workers.
- Conducting joint Insight and Learning visits with the Case Managers, to observe and better understand the standard of care on the wards.

The Peer Engagement Workers are using their lived experience to build rapport with service users and gather important insights, such as patient experience and the environment and culture on the wards.

The Patient Council and Peer Engagement Workers are part of a broader lived experience model, where we aspire to ensure that individuals with lived experience activity contribute to the co-design and evaluation of services.

"Mental health was an area in which I have lived experience and was the only field that I could see myself enjoying work."

(Peer Engagement Worker)

"As a Peer Engagement Worker, I have helped to build rapport, bridging the gap between service users and professionals."

(Peer Engagement Worker)

"As a team I would like us to continue positively impacting the lives of current and future service users. To create an environment and service that is working towards the progress and sustenance of a positive mental well-being for all service users in our care."

(Peer Engagement Worker)

"I am most proud about joining a team who are passionate and strongly spirited to effect change for the service users and the service as a whole, so that our individual and collective contributions work towards providing the best care for service users."

(Peer Engagement Worker)

"We have built a greater presence on hospital wards which is helping service users feel listened to, we can better understand what they are experiencing, what they are happy with and what they would like to improve."

(Peer Engagement Worker)

Who are we?
We are peer engagement workers, individuals who have used services employed for our lived experience. We are encouraged and supported as a member of the NLFCC (North London Forensic Collaborative) team. We work to bring a lived experience perspective to commissioning and ensure service user's views are represented. The aim is to improve your experience in secure services. With **YOUR** input we work to make positive and meaningful changes.

Where are we from?
Peer engagement workers are local individuals who have had lived experience through services as yourself. We are a diverse team from different backgrounds and have connections with secure services in North London. We have a wide range of knowledge and share information within our team.

What are we coming to do?
We will be speaking with service users that are living inside secure units and using the services. We believe that by speaking with you, we can understand what concerns you have and what changes you would like to see. We aim to do this from a range of platforms. We know what your experience is. We are very much looking forward to making you feel comfortable.

Together we can improve service quality

Big Hello from the Peer Engagement Workers
Barnet, Enfield and Haringey NHS Mental Health NHS Trust
A Community Working Part
NORTH LONDON FORENSIC COLLABORATIVE

"I enjoy the sense of connection I feel with the people I work with. We are all on a journey of recovery, and we can support and learn from each other along the way. I have had many meaningful conversations with service users, who say the Patient Engagement Workers role is important to their recovery and gives them hope."
(Peer Engagement Worker)

Learning Disability and Autism Programme

North London Forensic Collaborative has four male wards that deliver secure care for those with a learning disability and two male wards for autistic people.

Since its inception in 2020 North London Forensic Collaborative has delivered a programme of work aimed at achieving the national targets set out in NHS Long Term Plan with a specific focus on reducing the number of inpatient beds and creating specialist community services. To date we have achieved:

- A 63% reduction in placements outside of London since October 2020, from 27 placements to 10).
- Establishment of a Learning Disability and Autism Clinical Network, in addition to a sub-group for stopping the over-medication of people with a learning disability and autistic people (STOMP).
- Investment in a learning disability physical health model, including a focus on dysphagia and key outcomes associated with cardio-metabolic health.
- Commissioned and mobilised Community Forensic Learning Disability teams within North Central, North East and North West London.
- Improved quality oversight of services through enhanced quality visits that focus on the experience of patients and staff.
- Commissioning a voluntary sector organisation to facilitate the development of a Patient Council for learning disability and autism.



Service user artwork

We are developing a North London Forensic Collaborative Learning Disability Strategy which aims to ensure:

- Patients, families and carers are fully involved in the development of services – with co-production at the heart of service development.
- Development of a model of care, which is needs led and based on the best available evidence, ensuring that treatment is time limited, safe and effective.
- To continue to meet the NHS Long-Term plan target and continue to invest in community services.
- Ensure that environments are conducive to recovery and ensure parity of access and provision for women with a learning disability and autistic women.



Improving Patient Flow Programme

The North London Forensic Collaborative is pioneering a patient flow programme to prevent unnecessary delays to admission, enable patients to receive the right treatment at the right time and to reduce barriers and delays to discharge.

Key activities over the last year include:

- A £700K investment in staff dedicated to improving flow across the collaborative, including a dedicated clinical lead and quality improvement project manager in each of the five provider Trust sites.
- Launch of a two-year flow improvement programme using the Institute of Health Improvements model for quality improvement to address flow issues including admission processes, treatment pathways and barriers to discharge.
- The implementation of a North London Forensic Collaborative Trust wide monthly meeting where best practice and challenges are shared.
- The development of patient flow driver diagrams to examine admission, treatment and discharge pathways, in addition to developing a suite of change ideas and the start of Plan, Do, Study, Act cycles.

The next phase of the programme is to:

- Resource and pilot changes ideas that have emerged from the Plan, Do, Study, Act cycles.
- Increase the level of service user co-production in developing change ideas.
- Use other data sources about the needs of patients gathered by the Clinical Networks to identify the root causes of delayed discharges.



Clinical Networks in Action and Shared Learning

North London Forensic Collaborative operates Staff Clinical Networks whose membership includes representation from each provider Trust. A central part of their role is to problem solve as a system, by sharing best practice and learning. This represents a significant shift in culture, where traditionally providers would work independently. Clinical Networks identify and implement quality improvements and lead service redesign. A devolved budget is provided to each Clinical Network to deliver these changes which in turn, increases staff autonomy, supports team effectiveness and creates a sense of shared responsibility for addressing challenges at both a system and place level.

Learning Disability and Autism Clinical Network

The Learning Disability and Autism Clinical Network is a well-established forum of clinicians and managers who work collaboratively to develop services that are offered to people with a learning disability and autistic people, with an emphasis on equity of care.

During the last year, work has focussed on developing a full pathway from inpatient services into the community for people with a learning disability and autistic people.

Through a series of learning events, clinicians have shared best practice, research and quality improvement projects across a range of areas including:

- Positive Behaviour Support and how to embed the practice into teams, on wards and to support service users in developing collaborative positive behaviour support plans, which aim to reduce restrictive intervention and behaviours that challenge.
- Dysphagia and the role of speech and language therapists in ensuring the risks of choking in service users with a learning disability and autistic service users are understood, assessed and appropriate care plans are developed.
- Relationships and sexual expression – men's health groups and sexual safety quality improvement projects have been undertaken to support service users to explore their wellbeing and sexual health, but also understand what a healthy relationship looks and feels like, alongside safe sexual expression.

- A learning event considered how our services can address physical health needs, in particular the challenge of obesity and weight management. A range of local initiatives including exercise, education and lifestyle adaptations have been implemented to improve physical wellbeing of our service users.
- Development of a library of accessible information for all services to access. With over forty items ranging from medication leaflets to physical health information, this is an invaluable resource that supports service users and clinicians to have information that enables better understanding and communication.

The year ahead is exciting with the development of a North London Forensic Collaborative admission panel, launch of the Learning Disability and Autism strategy, operationalisation of Specialist Community Forensic Learning Disability Teams across all boroughs, and the development of a centre of excellence for specialist women's learning disability and autism beds.

STOMP

STOMP which stands for 'Stopping Over Medication of People' with a learning disability and autistic people, is a national initiative, is a national initiative that aims to improve quality of life and ensure that people only receive psychotropic medication for the right reasons and in the right amount. The STOMP project is helping to improve our understanding of psychotropic medicines and when they should be administered, whilst also ensuring that people with a learning disability and autistic people are involved in decisions about their health, wellbeing and treatment.

The North London Forensic Collaborative Learning Disability and Autism Network developed a STOMP project focusing on Positive Behaviour Support in addition to medication. Medication is sometimes used as a coping mechanism which should be reduced or stopped, as there are alternative approaches to helping people stay well and safe.

The STOMP project has been supported by all North London Forensic Collaborative provider Trusts and independent service providers, as well as various healthcare professionals including Consultant Forensic Psychiatrists, Occupational Therapists, Speech and Language Therapists, Nurses, Pharmacists and Case Managers.

The project group reviewed national best practice and used a STOMP Pledge Audit Tool to undertake an assessment of the inpatient practices employed by the North London Forensic Collaborative provider Trusts, as well as scope the application of implementing Positive Behaviour Support including addressing service user sensory and communication needs.

A medication audit was developed and hospital wards within each Trust assessed the amount and type of medication patients were currently being prescribed compared to the time of admission. An easy read leaflet for service users was developed to provide information and guidance about STOMP. A questionnaire was designed for carers of service users, inviting their views on the use of medication. The outcomes from the medication audit, service user questionnaire and carer views are now being used to guide medication reduction decisions.

Key lessons learned from the first year of the STOMP project was that one in five service users were prescribed antipsychotic medication without any clinical indication for its need. The project identified that the reduction of medication is only part of the solution. Supporting the holistic needs of service users is necessary, with a focus on enhancing overall quality of life, engagement and interaction with others, as well as physical health to help those we care for become more active and remain in the best of health.

The project group are continuing to deliver the STOMP project work into a second year. All staff working in the North London Forensic Collaborative Learning Disability and Autism Services are also completing a series of online professional training sessions to stop the over-medication of people with a learning disability and autistic people.

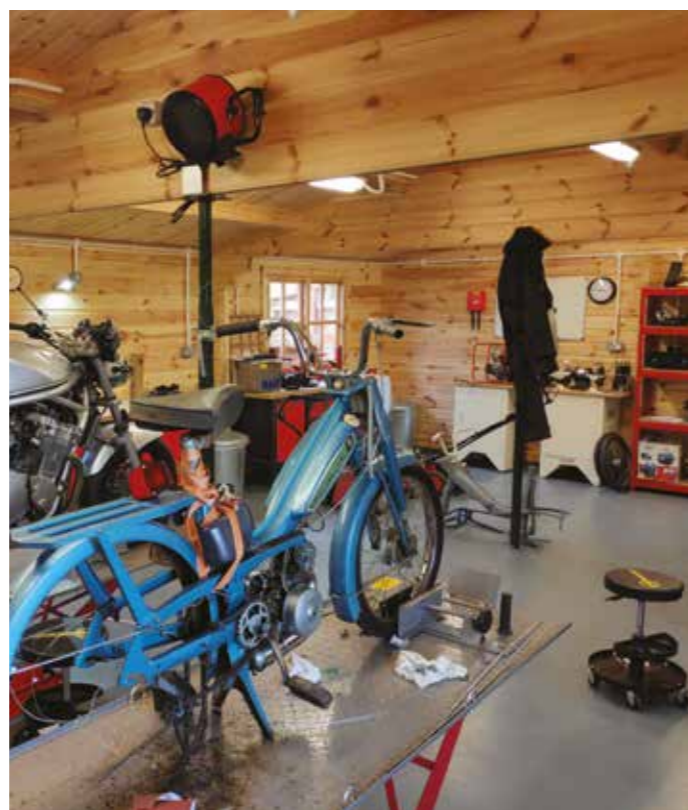


Psychological Therapies Clinical Network

The Psychological Therapies Clinical Network are a group of psychologists from across the Collaborative who meet to share expertise, best practice, lessons learnt and undertake research and quality improvement projects to better understand and develop an evidence base for forensic services.

The Psychological Therapies Clinical Network will support the commissioning of a programme of research to enhance the clinical research activity of the North London Forensic Collaborative. There are three research subgroups working alongside the forensic mental health services at Barnet, Enfield and Haringey Mental Health NHS Trust, East London NHS Foundation Trust and West London NHS Trust. The purpose of these teams is to support clinical research that has a beneficial impact on patient care, ensure the efficient running of our services and to help us to better understand and address inequality in North London Forensic Collaborative services.

The work of the subgroups intends to improve collaboration across all provider Trusts by conducting research that recruits across more than one provider and assist the strategic decision-making process within North London Forensic Collaborative. This exciting programme of research also enables our clinicians to initiate and develop their own research ideas.



Service user workshop

Women's Services Clinical Network

The Women's Services Clinical Network comprises members from each of the three female service providers (Barnet, Enfield and Haringey Mental Health NHS Trust, East London NHS Foundation Trust and West London NHS Trust). Members meet to develop and share strategic aims for addressing the mental health needs of women residing in North London. As part of its responsibilities, the network monitors female patients placed outside of the collaborative footprint and discusses options for the transfer of patients, to enable specialist care to be delivered closer to home.

A Women's Clinical Network event that focussed on trauma informed care was held in February this year to share best practice and lessons learnt. A Consultant Psychiatrist engaged staff in reflective practice, focussing on the adverse impact of the staff culture and treatment of patients at Edenfield Mental Health Hospital and shared practical approaches for maintaining a therapeutic alliance when working with inpatients. The event provided a valuable opportunity to gain updated guidance, new perspectives and network with colleagues from Providers across North London.

The year ahead includes undertaking a whole system needs assessment for each female patient in North London and work to develop improved specialist learning disability and autism provision for women in collaboration with the Learning Disability and or Autism Clinical Network.



Beekeeping

Allied Health Professionals Services Clinical Network

The Allied Health Professionals Clinical Network, is the newest Clinical Network, bringing together a multi-disciplinary team of service leads from occupational therapy, speech and language therapy and arts therapies from each of the five North London Forensic Collaborative providers.

This Clinical Network shares expertise and best practise to provide quality and effective care, alongside developing new initiatives based on the latest research and evidence-based practice, with particular focus on addressing inequalities in access for service users from diverse backgrounds.

The Allied Health Professional Clinical Network will help to drive improvements in patient pathways and community transition to meet the needs of the North London population requiring forensic mental health care and treatment.

Health Professionals include Therapists in art, drama, music, Chiropodists and Podiatrists, Dietitians, Occupational Therapists Arts, Physiotherapists, Speech and Language Therapists.

We have established our key areas of focus for the next 12 months including:

- Recruitment, retention and promotion of Allied Health Professional roles and support worker roles to recognise their contribution across the North London Forensic Collaborative.
- Promoting innovation and partnerships across allied health services, including the development and implementation of a Voluntary, Community, Faith and Social Enterprise grant scheme.
- Embedding the service user and peer engagement worker agenda.
- Development of sensory and trauma informed based approaches.

Community Services Clinical Network

The Community Services Clinical Network brings together three NHS Trust providers that deliver specialist community and learning disability forensic services across East London, including Barnet, Enfield and Haringey Mental Health NHS Trust, East London NHS Foundation Trust and West London NHS Trust.

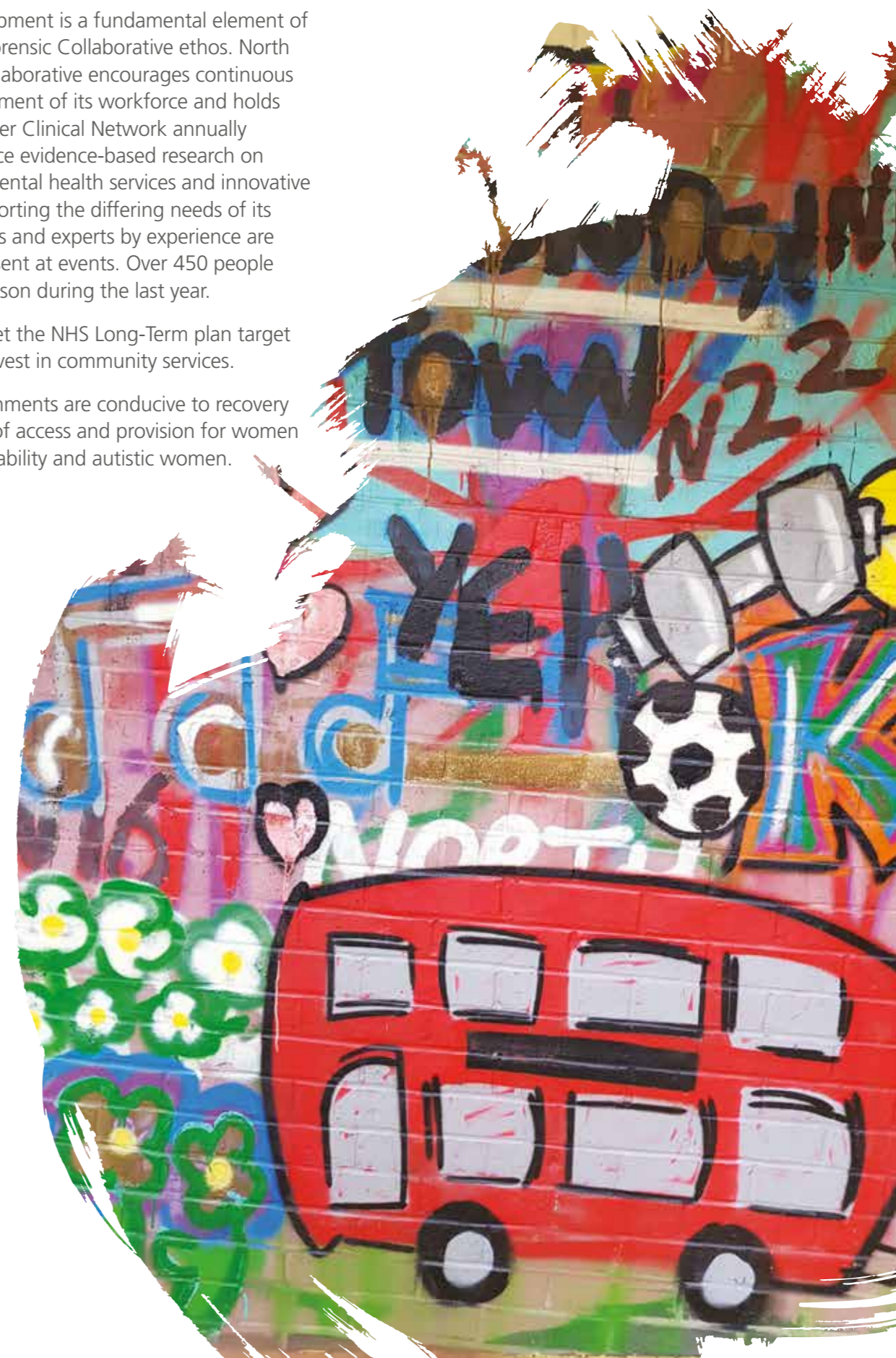
The Specialist Community Forensic Teams and Community Forensic Learning Disability Teams have been working collaboratively to address the needs of the entire population, and consider issues arising when service users move between different clinical care teams including:

- Sharing and agreeing staffing models to ensure consistency in the care and treatment services for patients in the community across North London.
- Developing collaborative-wide key performance indicators to monitor the effectiveness of Specialist Community Forensic Teams which is reviewed on a quarterly basis by the Clinical Network and within contract meetings.
- Developing service user, carer and accommodation provider surveys to provide meaningful feedback on the quality and experience of care delivered by Specialist Community Forensic Teams.
- Agreeing a shared protocol on transfer and recall arrangements, which clearly sets out how the transition between different teams should be managed.

Shared Learning Events

Learning and development is a fundamental element of the North London Forensic Collaborative ethos. North London Forensic Collaborative encourages continuous professional development of its workforce and holds one learning event per Clinical Network annually to share good practice evidence-based research on delivering forensic mental health services and innovative approaches for supporting the differing needs of its service users. Patients and experts by experience are supported to co-present at events. Over 450 people have attended in person during the last year.

- To continue to meet the NHS Long-Term plan target and continue to invest in community services.
- Ensure that environments are conducive to recovery and ensure parity of access and provision for women with a learning disability and autistic women.



Our Achievements 2022/23



8
new Staff Clinical
Networks developed*



12%
reduction in out of
area placements for
adult secure services



£3.25m
invested in a physical health
model of care focusing on obesity,
smoking, substance misuse and
cardiovascular diseases



**New 16-bed
ward**

specifically for patients waiting
for admission from prison

75%+

surpassing the national
care and treatment
target of 75% across
our whole region



10%

reduction in assuring
transformation
patients



**5 x
advocate**

available to service users
1 on every ward each week in
every service



**Lived
experience**

more staff with
lived experience in
quality assurance
roles



£9m

invested in new specialist community
forensic teams across 5 partner Trusts,
leading to 150 new jobs benefiting 600+
service users

**450+
attendees**

to our Clinical Network* learning
events over 12 months



£700,000

invested in a collaborative research network
to conduct epidemiological research



£1.2m

invested in developing
innovative pilots, via 8
Staff Clinical Networks*

**Good or
Outstanding**

CQC ratings for all 5 North London
Forensic Collaborative Trusts



£3.2m

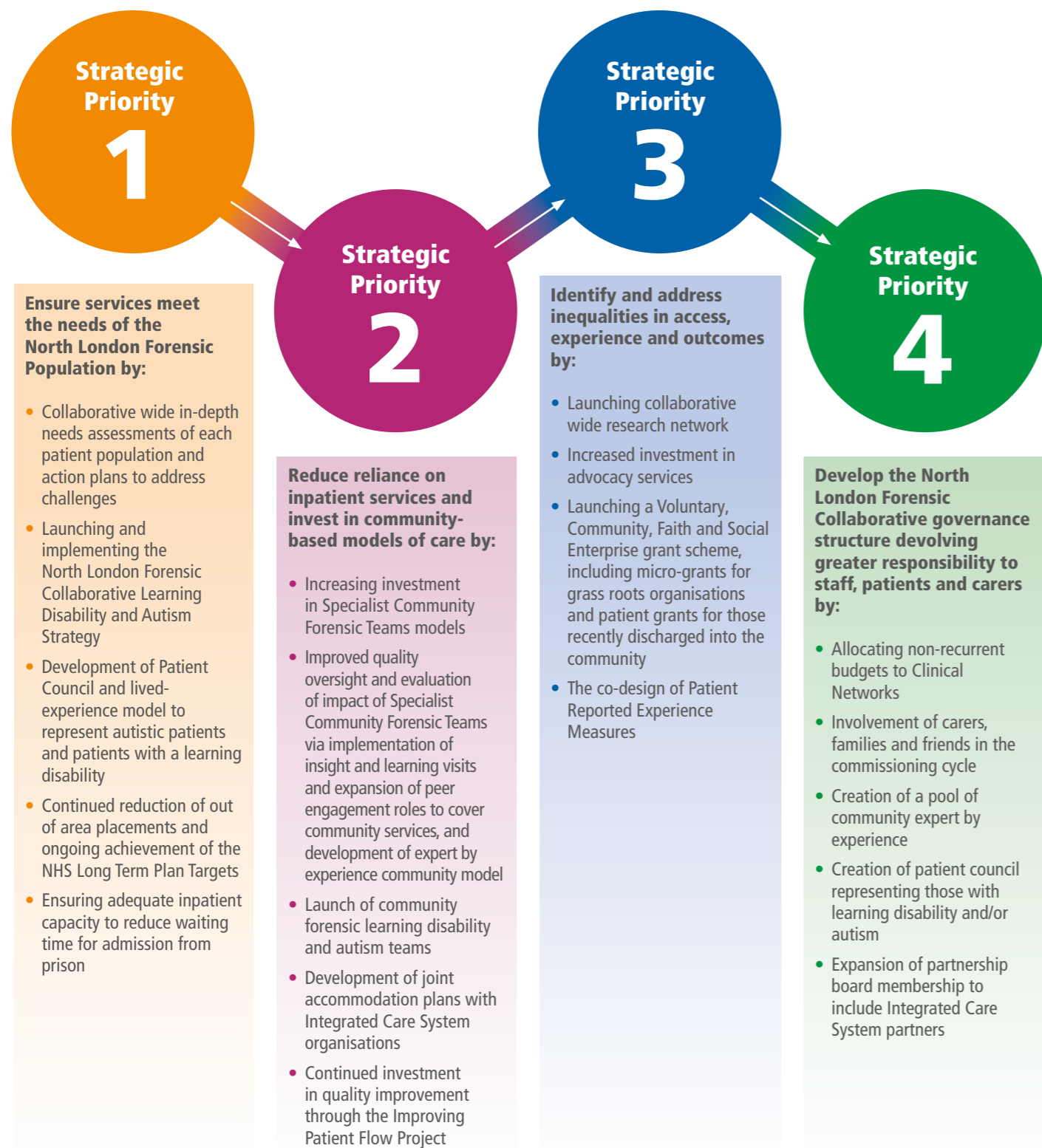
invested in community forensic learning
disability teams, leading to 70 new jobs

***Staff Clinical Networks Include:**

- Psychological Therapies Services
- Low Secure Services
- Women's Services
- Allied Health Professionals Services
- Nursing Services
- Community Services
- Learning Disability and Autism Services
- Research Clinical Network

Our Priorities 2023/24

North London Forensic Collaborative has set out its strategic objectives for 2023/24 and beyond.



Thank You

As representatives of the five NHS Trusts that comprise the provider collaborative, we have had the pleasure of witnessing and supporting the continued development of the partnership over the last 12 months.

We have been particularly pleased to have the Patient Council attend and present at every Board meeting. Hearing directly from current inpatients across all providers has demonstrated the power of co-production and how as a partnership we can harness this invaluable asset to achieve more together. This has included responding to the Panorama programme on Edenfield Mental Health Hospital, by developing a Speak Up campaign, which evidences the commitment from patients and staff across the collaborative to work together to improve patient care. We are also pleased that staff from across the collaborative are engaged in the eight Clinical Networks. We hope this will raise the profile and build upon the shared sense of belonging that being part of a collaborative should engender.

We recognise that even in continued adverse conditions of workforce challenges, high demand and post pandemic recovery, as a collaborative we have delivered major service developments including the commissioning of three community forensic learning disability and autism teams in each North London integrated care system region, major enhancements to inpatient physical health services in all five NHS Trusts, research teams in three Trusts forming a single research network and increased advocacy provision, ensuring that every ward has in person weekly access to an advocate.

We would like to take this opportunity to thank all the staff, patients, service users, carers and families within the collaborative for their continued work, dedication and involvement with the partnership and we look forward to hearing about even greater success in 2023/24.

The Partnership Board
North London Forensic Collaborative





Get In Touch

Email Us: beh-tr.nlfc@nhs.net

Phone Us: **0208 702 3818**

Write to Us: **5 Gower Street, London WC1E 6HA**

If you require urgent mental health support and you live within Barnet, Enfield or Haringey contact our 24-hour Crisis Telephone Service: **0800 151 0023**

Information in Alternative Formats

To receive an Easy Read version of this annual report or if you require this document in an alternative format, please contact North London Forensic Collaborative using the details above.