

THE MASK FIT TESTING SERVICE NEWSLETTER

Care
Respect
Inclusivity

NHS
East London
NHS Foundation Trust

Introduction:

GREETINGS! From your Mask fit test team.

This newsletter has been launched to increase the awareness about FFP3 mask fit testing amongst our staff. As part of it's commitment to ensuring a safe work environment for all its employees, the trust has established certain protocols and procedures that help maintain the highest standards of safety. One such important measure is the requirement for all CPR (BLS/ILS) trained staff members to undergo a Mask Fit Test at the earliest possible date. This is in accordance with the Resuscitation Council Guidelines.

Is there an urgent need to get fit tested on an FFP3 mask?

While there are always new emerging infectious diseases and viruses , infection control will always remain a consistent priority.

Mask fit testing is a crucial part of Health & Safety commitments at ELFT, it plays a significant role in protecting our patients, ourselves , your colleagues and visitors to our trust from the potential spread of respiratory pathogens. Thus making us a resilient organisation to work and provide care within. The primary objectives of mask fit testing are:

1. **Ensuring correct Protection:** Different individuals have varying facial structures, and not all masks fit everyone equally. The fit test helps identify the right mask size and type to ensure an airtight seal, thereby maximizing the mask's effectiveness in filtering out airborne contaminants.

2. **Preventing Respiratory Illness:** By wearing a successfully fitted mask, you reduce the risk of inhaling and transmitting harmful particles, pathogens, or contaminants that could lead to respiratory illnesses.

3. **Compliance with Regulations:**

Level 1 – Preparedness for business as usual

Staff in clinical areas are most likely to provide care to patients who present at healthcare facilities with an infectious pathogen spread by the airborne route; and/or undertake aerosol generating procedures i.e. resuscitation attempts.

Level 2 – Preparedness in the event of emerging threat

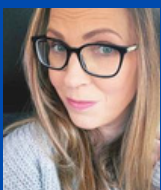
Staff in clinical settings are likely to provide care to patients admitted to a hospital in the event of an emerging threat e.g. specialty wards. In the event of an 'epidemic/pandemic' local assessment as per the organisation's preparedness plans apply (which means to be prepared for any eventuality).

Current scenario at ELFT:

While many of our staff have been fit tested, not all of them are COMPLIANT because of the following:

- A fit test is only valid for 2 years, so many of those fit tests are no longer valid.
- Secondly, some of the masks used for fit testing in the past are no longer in the trust's inventory.

The Team:



Siobhan Fensom
Fit test lead
Trust wide

Jackie Warren
Fit test Co-ordinator
Trust wide

Kamila Skoczynska
Fit tester
Luton & Bedford

Rong Wu
Fit tester
London

Francis Rodrigues
Fit tester
London

Kindly note: The fit test service is provided trust wide. For details of locations, days and times please visit the fit testing web page on the intranet.

For any queries please Email: elft.fittesting@nhs.net