

# Supporting Futures

## Empowering Pathways to Employment

Are you interested in going into employment but not sure where to start looking?  
Do you feel like you need some support in applying for work and finding something to suit your needs?  
Have you ever felt held back from working by a long term health condition?

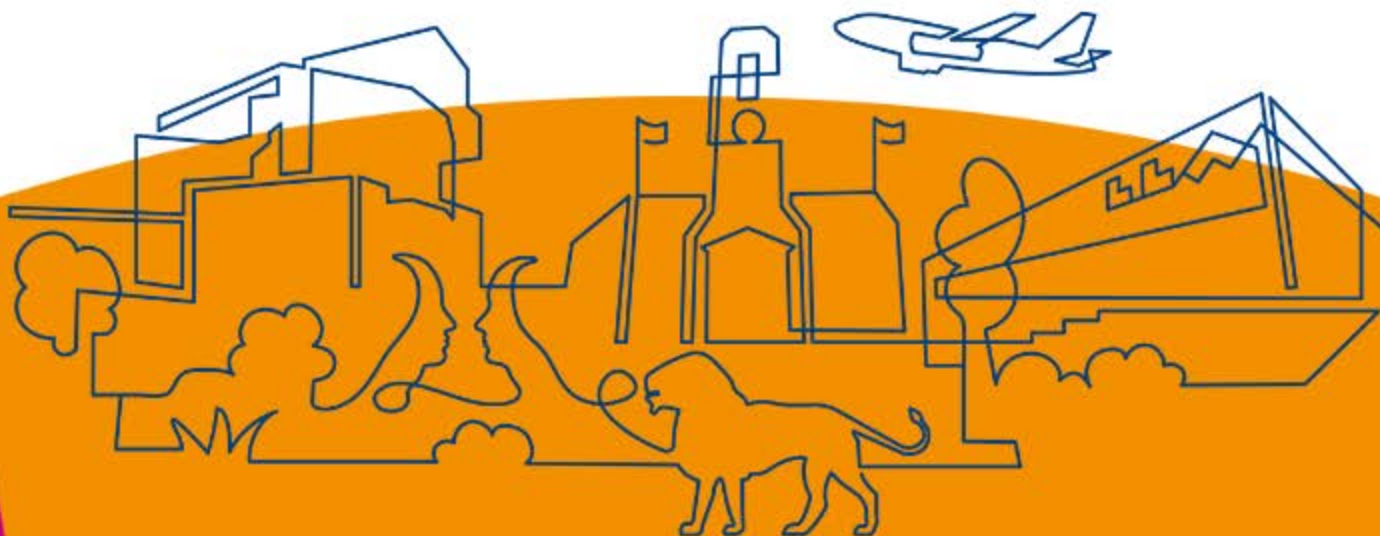
If you are using any ELFT service in Bedfordshire or Luton or care for someone who does and would like to explore support options for entering employment, come and see us!

There will be an assortment of stalls and talks to support pathways to employment and all that entails!

Scan the QR code to sign-up



**Tuesday 24th September, 10am - 3pm**  
**Venue 360, 20 Gypsy Lane, Luton, LU1 3JH**



**We care**  
**We respect**  
**We are inclusive**

