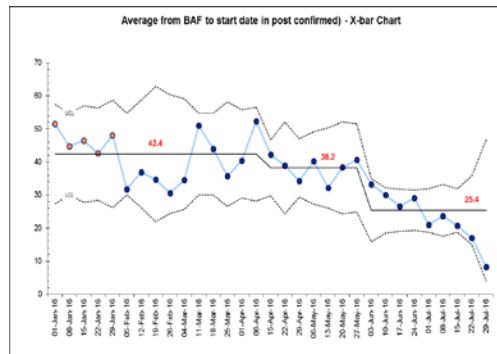
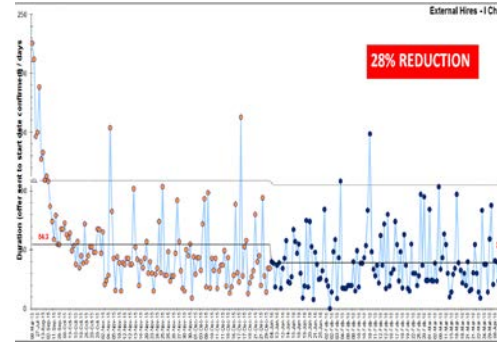


## Aim

To Reduce the Time it takes to Hire to 35 Days by December 2016

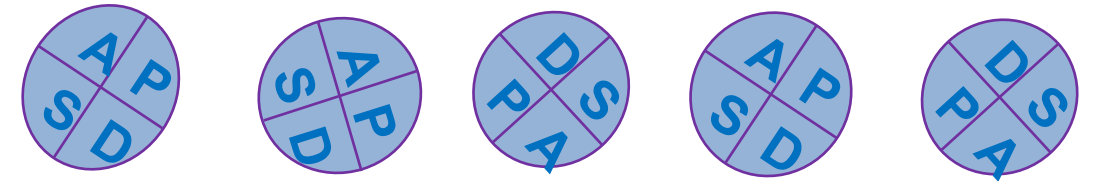
## Why is this important to service users and carers?

Departments that are short staffed will impact on the quality of care provided to service users and carers. Departments that are fully staffed will have enough labour resources to deliver the best quality of care.



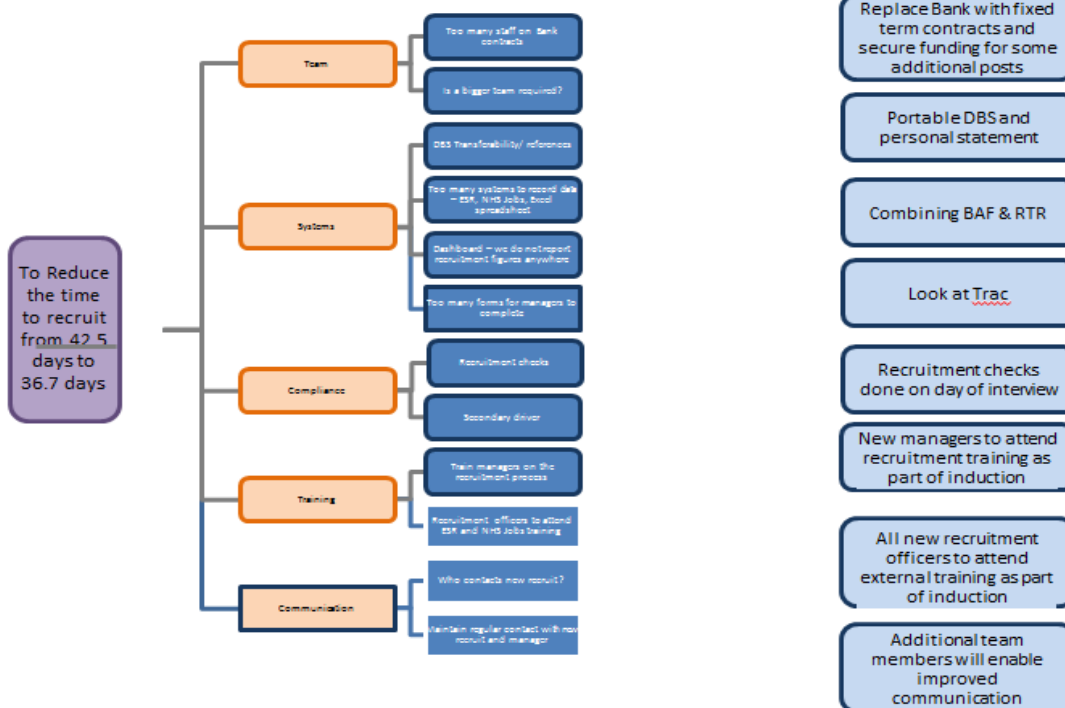
## Tests of Change

- References (internal and external)
- Better usage of NHS jobs (3 reason to shortlist me)
- Filtering Questions - NHS jobs
- Online Recruitment Forms

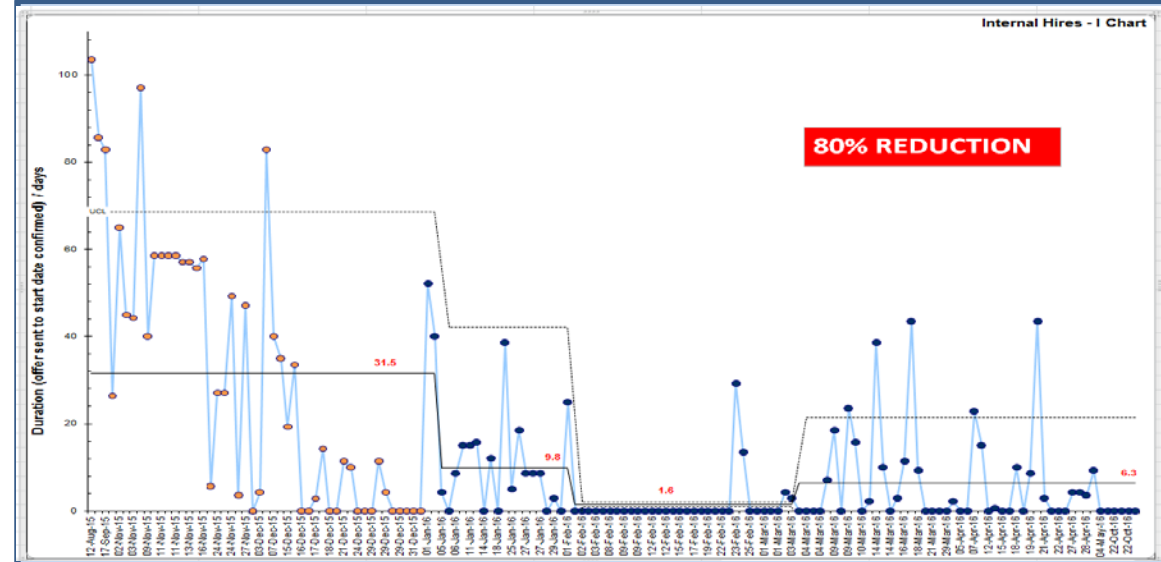


## Driver diagram

AIM      PRIMARY DRIVERS      SECONDARY DRIVERS      CHANGE IDEAS



## Data



## Learning

- We have learnt that:
- Some barriers that cannot be overcome (DBS)
  - People need time to adjust to change
  - We need to maintain a good balance between reducing the time to hire and remaining safe